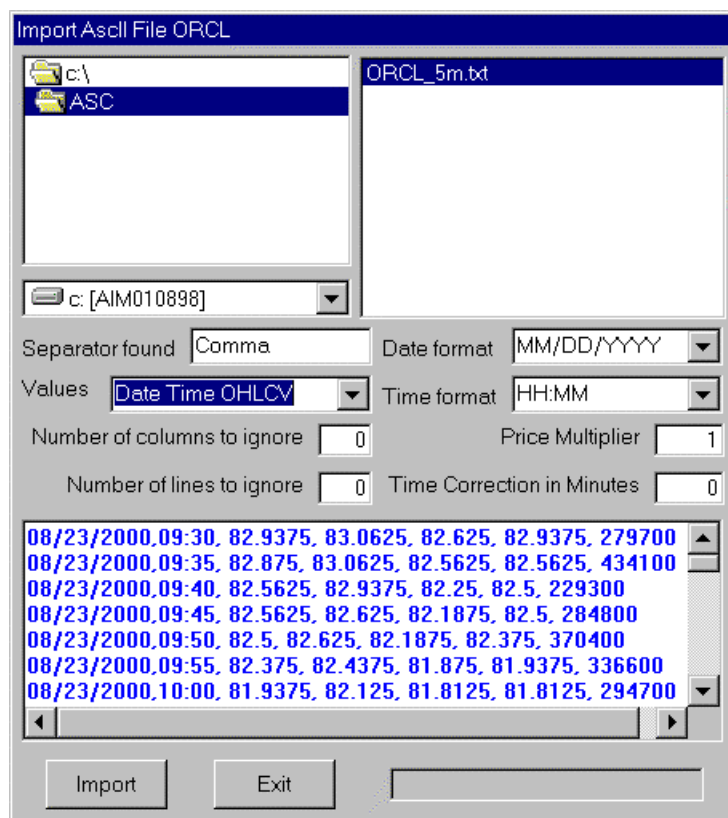


# IFT

## IMPORT ASCII DATA

When in the Contracts List window or in the Plans List window you can select to import ASCII data from the selected contract, just right click it and select import ascii data.



Using the driver list, the folder list and the file list, find and click the ASCII file you want to import. When you do that the program will try to find the formats on this file, in this case the program found that the file is comma delimited, the date format is MM/DD/YYYY, the time format is HH:MM. The Values list you will be to select yourself for a file that has no header, in the case we selected Data Time OHLCV file format.

Number of columns to ignore will be used if you want to discard some of the columns.

Number of line to ignore will be used for the program to ignore lines on the begin of the file.

Price Multiplier will be used to multiply the price values during the import.

Time Correction in Minutes will be use to correct intraday times.

If you click the Import button, the program will check the file and if it is an intraday file it will show a message interval in minutes for the intraday interval and asks if it is correct.

If your file has a header the program will find that and will import the data using the header information.

Import Ascii File ORCL

c:\  
ASC

ORCL\_5m.txt

c: [AIM010898]

Separator found Comma Date format MM/DD/YYYY

Values HEADER Time format HH:MM

Number of columns to ignore 0 Price Multiplier 1

Number of lines to ignore 0 Time Correction in Minutes 0

DATE,TIME,OPEN,HIGH,LOW,CLOSE,VOLUME  
 08/23/2000,09:30, 82.9375, 83.0625, 82.625, 82.9375, 279700  
 08/23/2000,09:35, 82.875, 83.0625, 82.5625, 82.5625, 434100  
 08/23/2000,09:40, 82.5625, 82.9375, 82.25, 82.5, 229300  
 08/23/2000,09:45, 82.5625, 82.625, 82.1875, 82.5, 284800  
 08/23/2000,09:50, 82.5, 82.625, 82.1875, 82.375, 370400  
 08/23/2000,09:55, 82.375, 82.4375, 81.875, 81.9375, 336600

Import Exit

Valid headers are:

DISCARD, NONE – will discard the column.  
 DATE  
 TIME  
 OPEN  
 HIGH  
 LOW  
 CLOSE  
 VOL or VOLUME or TOTVOL  
 VOLTICK if the volume in ticks.